

IANZ Accredited Water Meter Testing

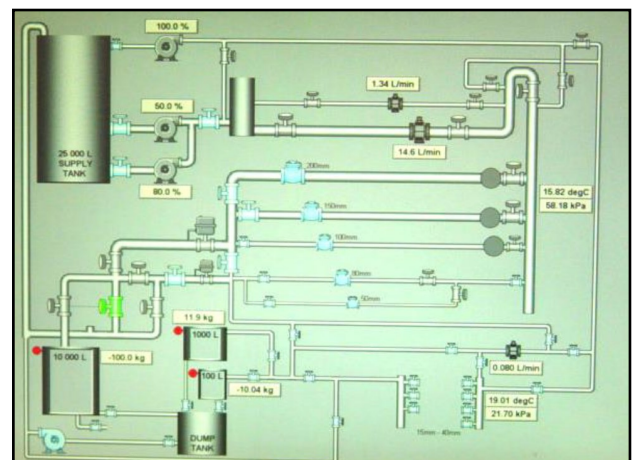
Meter Services is a subsidiary company of Arthur D Riley & Co, and has been specialising in water meters since 1994, providing quality products and services to the water industry, including:

- calibration and testing
- reconditioning and repairing
- on-site servicing and testing
- supply of new domestic, industrial and bulk flow meters
- meter hireage

In 2005 a new test laboratory was designed and constructed by Meter Services. This laboratory is IANZ accredited to ISO17025, to test meter from 0.25lpm to 5,300lpm. Those flow rates comply with ISO4064 and OIML R49 specification for meters from 15-150mm. As well as testing to these standard, we can test meters to almost any customers requirement.

Meter Services has developed a software package, with the latest on-screen graphics, to control the calibration procedure. This enables us to produce certificates with total confidence of accuracy. With the smallest weigh tank (100ltr), scaled to 0.01kg, this enables us to test meters with immense accuracy.

This test facility has the capability of testing many types of water meters, including: positive displacement, woltman, multi-jet, electromagnetic, ultrasonic, vortex or any meter that has a volume totaliser. With nine separate test lines, we can accommodate almost any type of fitting, including: 15mm - 50mm BSP thread, 40mm – 200mm BS10 table D or E flange, hydrant standpipe, 64mm instantaneous coupling, 40mm – 150mm camlock, 40mm – 200mm wafer, Tri-Clamp and many more.



WELLINGTON	AUCKLAND	HAMILTON	NAPIER	CHRISTCHURCH
137 Thorndon Quay Wellington 6011 T: 04 472 7614	8 Beatrice Tinsley Crescent Rosedale 0632 T: 09 444 2350	1/21 Railside Place Dinsdale 3204 T: 07 846 0602	35 Wakefield Street Onekawa 4110 T: 06 834 3030	4/89 Vickerys Road Wigram 8042 T: 03 977 6080

On-Site Water Meter Testing

Do you measure flow rate or volume using a water meter?

Do you have a Water Take Consent?

Do you test water meters on-site?

If you answered yes to any of the above questions, Meter Services can help you!

On-Site Testing and Verification:

Meter Services can offer the services of onsite flow and volume verification, as well as Water Measurement System verification, to meet the requirements of the NES for Water Measuring Devices. We ensure we photograph and document the site fully and then verify the accuracy of the existing measurement device. If necessary, we can offer advice to ensure the site is able to meet the current standards.

Testing Your On-Site Reference Meter

If you test meters on-site, your reference meter needs to be certified yearly. The MS laboratory is the only test facility in New Zealand, which is accredited by IANZ to ISO 17025 (at time of print), capably of testing water meters from 0.25 lpm to 5,300 lpm. The test rig has nine separate testing lines and can accommodate almost any type of standard fitting. We also have the ability to test full trailer test rig set-ups and truck mounted meters.

Whether you require accredited test certificates, or onsite verification to meet the NES water take consents requirements, Meter Services can help you achieve that goal. Call or email us to ask about our testing services (info@meterservices.co.nz).



WELLINGTON

137 Thorndon Quay
Wellington 6011
T: 04 472 7614

AUCKLAND

8 Beatrice Tinsley Crescent
Rosedale 0632
T: 09 444 2350

HAMILTON

1/21 Railside Place
Dinsdale 3204
T: 07 846 0602

NAPIER

35 Wakefield Street
Onekawa 4110
T: 06 834 3030

CHRISTCHURCH

4/89 Vickers Road
Wigram 8042
T: 03 977 6080