

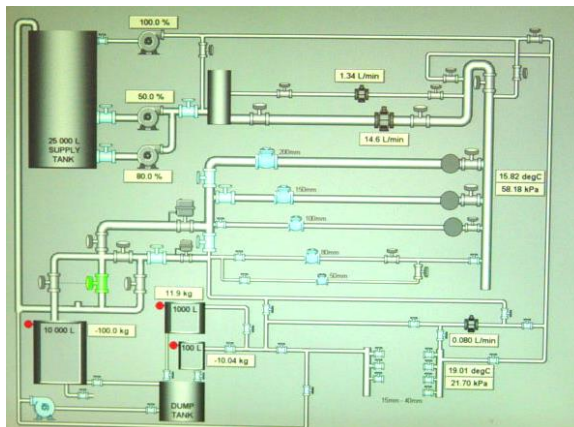
## IANZ Accredited Water Meter Testing

Meter Services is a subsidiary company of Arthur D Riley & Co, that has been specialising in water meters since 1994, providing quality products and services to the water industry, including:

- Calibration and testing
- Reconditioning and repairing
- On-site servicing and testing
- Supply of new domestic, industrial and bulk flow meters
- Meter hireage

In 2005 a new test laboratory was designed and constructed by Meter Services.

This new laboratory is IANZ accredited to ISO17025, to test meters from 0.25 lpm to 5700 lpm. These flow rates comply with ISO4064 and OIML R49 specification for meters from 15mm to 150mm. As well as testing to these standards, we can test meters to almost any customer's requirements.



Meter Services has developed a software package, with the latest on-screen graphics, to control the calibration procedure. This enables us to produce certificates with total confidence of accuracy.

With the smallest weigh tank (100 ltr), scaled to 0.01 kg, this enables us to test meters with immense accuracy.

This test facility has the capability of testing many types of water meters, including: positive displacement, woltman, multi-jet, electromagnetic, ultrasonic, vortex or any meter that has a volume totaliser.

With nine separate test lines, we can accommodate almost any type of fitting, including: 15mm - 50mm BSP thread, 40mm – 200mm BS10 table D or E flange, hydrant standpipe, 64mm instantaneous coupling, 40mm – 150mm camlock, 40mm – 200mm wafer, Tri-Clamp and many more.

## METER SERVICES

8 Beatrice Tinsley Crescent, Albany 0632  
PO Box 3749, Wellington 6140  
TEL 09 444 3050 info@eterservices.co.nz  
www.eterservices.co.nz



# On-Site Water Meter Testing

- **Do you measure flow rate or volume using a water meter?**
- **Do you have a Water Take Consent?**
- **Do you test water meters on-site?**

If you answered yes to any of the above questions, Meter Services (MS) can help you.

## **On-Site Testing and Verification:**

MS can offer the services of onsite flow and volume verification, as well as Water Measurement System verification, to meet the requirements of the NES for Water Measuring Devices. We ensure we photograph and document the site fully and then verify the accuracy of the existing measurement device. If necessary, we can offer advice to ensure the site is able to meet the current standards.



## **Testing Your On-site Reference Meter**

If you test meters on-site, your reference meter needs to be certified yearly. The MS laboratory is the only test facility in New Zealand, which is accredited by IANZ to ISO 17025 (at time of print), capable of testing water meters from 0.25 lpm to 5700 lpm. The test rig has nine separate testing lines and can accommodate almost any type of standard fitting. We also have the ability to test full trailer test rig set-ups and truck mounted meters.



Whether you require accredited test certificates, or onsite verification to meet the NES water take consents requirements, MS can help you achieve that goal. Call or email us to ask about our testing services.  
(info@eterservices.co.nz)



fieldsmart technology



ADRwater

**AUCKLAND**  
8 BEATRICE TINSLEY CRES  
ROSEDALE 0632  
PO BOX 302-248, NORTH HARBOUR  
AUCKLAND 0751  
T: (09) 444 2350 F: (09) 444 3085

**HAMILTON**  
1/21 RAILSIDE PLACE  
DINSDALE 3204  
PO BOX 230  
RAGLAN 3265  
T: (07) 846 0602 F: (07) 846 0604

**WELLINGTON HEAD OFFICE**  
137 THORNDON QUAY  
WELLINGTON 6011  
PO BOX 3749  
WELLINGTON 6140  
T: (04) 472 7614 F: (04) 472 7658

**CHRISTCHURCH**  
UNIT 4, 89 VICKERY'S ROAD  
WIGRAM 8042  
PO BOX 11 033, SOCKBURN  
CHRISTCHURCH 8443  
T: (03) 379 2628 F: (03) 379 2627